

Ship Integration Service

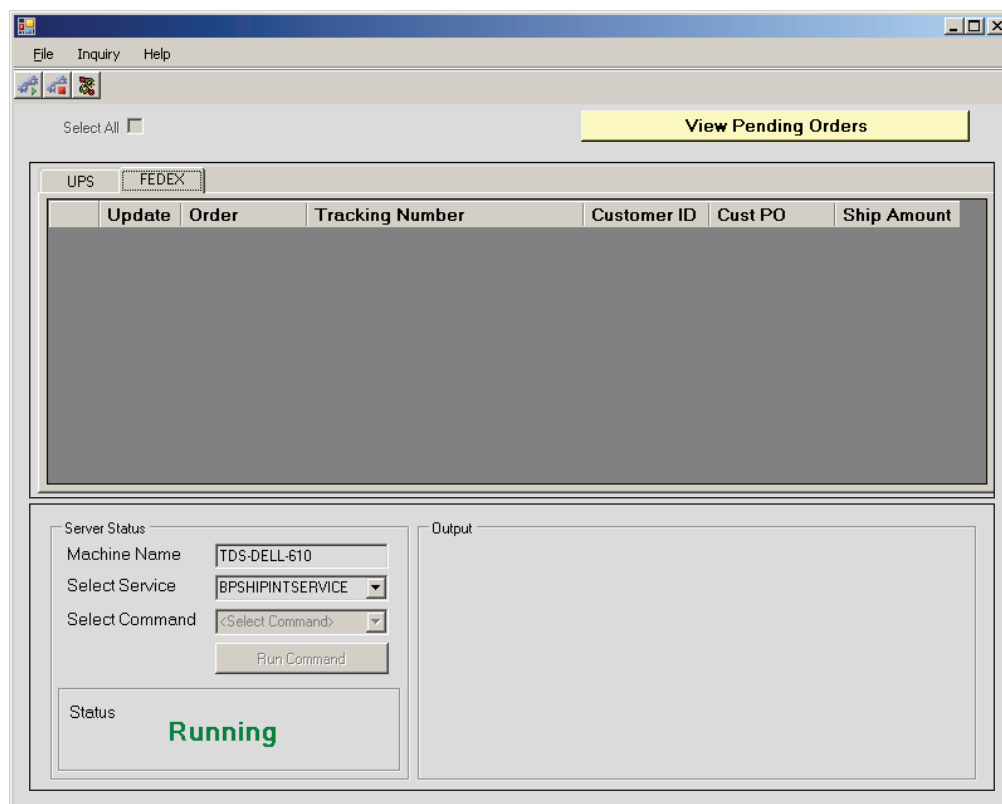
For MAX™ (Pervasive) or (MS-SQL)

Users Quick Start

Ship Integration Service

Purpose: The BP Ship Integration Service Application will update shipping charges and tracking numbers from both UPS and FEDEX to MAX. In addition it creates an efficient way to access tracking number information with correlated sales orders in MAX and access tracking information from UPS and FED EX web sites.

When MAX sales orders are shipped and ready to invoice, there is the need to enter or update the shipping charges from UPS or FedEx systems. Usually this is manually entered by administrative staff prior to posting invoices over to Great Plains The Ship Integration Service automates this process and also provides a GUI interface to manage and gain more control.



System Requirements:

- UPS World Ship and Fed EX Desktop Software
- EXACT Software MAX (Pervasive or MSSQL)
- Windows XP and .NET Framework 3.5 SP1

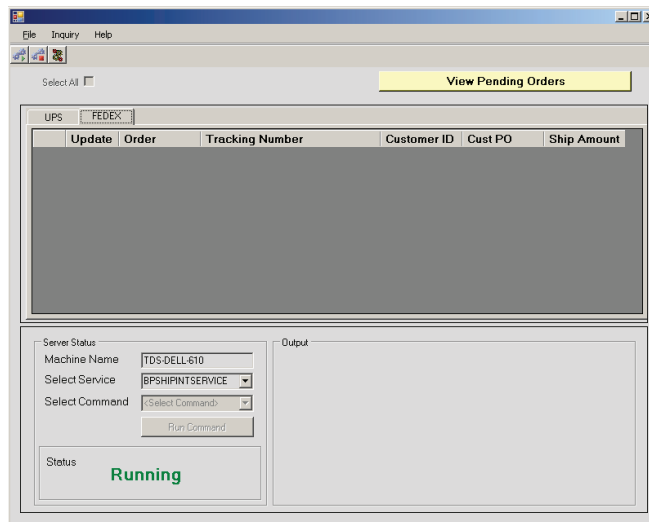
Ship Integration Service

Setup Steps:

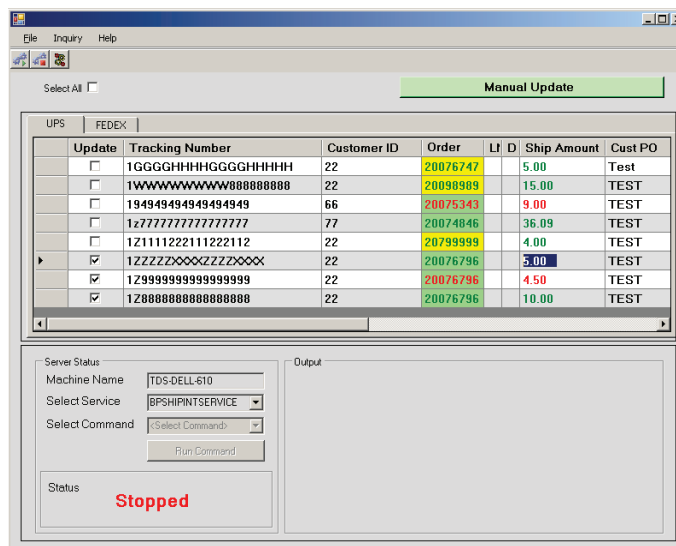
During your scheduled implementation, Max Professional Services will provide detailed field mapping instructions for both UPS and Fed Ex desktop Software. In addition the Ship Integration Windows Service and GUI application will be installed.

Using the Ship Integration Service Interface

Step 1: Simply click on the <View Pending Orders> button to retrieve current orders that have recently shipped with UPS or Fed Ex.



Step 2: Select orders for processing and then click <Manual Update> to continue.



Ship Integration Service

Note the yellow and green colored cells and also the red text that appears. The yellow highlighted orders are MAX orders that have shipped out of UPS and or Fed Ex...yet...have not been shipped in MAX. The green highlighted orders indicate that the order has shipped in the MAX system and will be processed whereas the yellow orders will be bypassed.

The red text indicates that the UPS or FED EX Shipment is a void. Void transactions will be subtracted when calculating the total shipping charge for updating the MAX Invoice Master.

Example: Here we see order 20076796 has had 3 UPS transactions...First a \$5.00 Charge, then a \$4.50 Void and another \$10.00 Charge. During the update to MAX, the order's shipping charge amount will now be 10.50.

The screenshot shows a software window titled "Ship Integration Service" with a menu bar (File, Inquiry, Help) and a toolbar. A "View Pending Orders" button is visible. Below it is a table with columns: Update, Tracking Number, Customer ID, Order, L/D, Cust PO, and Ship. The table contains several rows, with some highlighted in yellow and green. Below the table is a "Server Status" panel with fields for Machine Name (TDS-DELL-610), Select Service (BPSHIPINTSERVICE), and Select Command (<Select Command>), along with a "Run Command" button. The status is "Stopped" in red text. To the right is an "Output" panel showing log messages for order 20076796, including successful updates and voids.

Update	Tracking Number	Customer ID	Order	L/D	Cust PO	Ship.
<input type="checkbox"/>	1GGGGHHHHGGGGHHHH	22	20076747		Test	5.00
<input type="checkbox"/>	1WWWWWWWWW88888888	22	20098989		TEST	15.00
<input type="checkbox"/>	1949494949494949	66	20075343		TEST	9.00
<input type="checkbox"/>	1z77777777777777	77	20074846		TEST	36.09
<input type="checkbox"/>	1Z1111222111222112	22	20799999		TEST	4.00
<input checked="" type="checkbox"/>	1ZZZZZXXXXZZZZXXXX	22	20076796		TEST	5.00
<input checked="" type="checkbox"/>	1Z99999999999999	22	20076796		TEST	4.50
<input checked="" type="checkbox"/>	1Z88888888888888	22	20076796		TEST	10.00

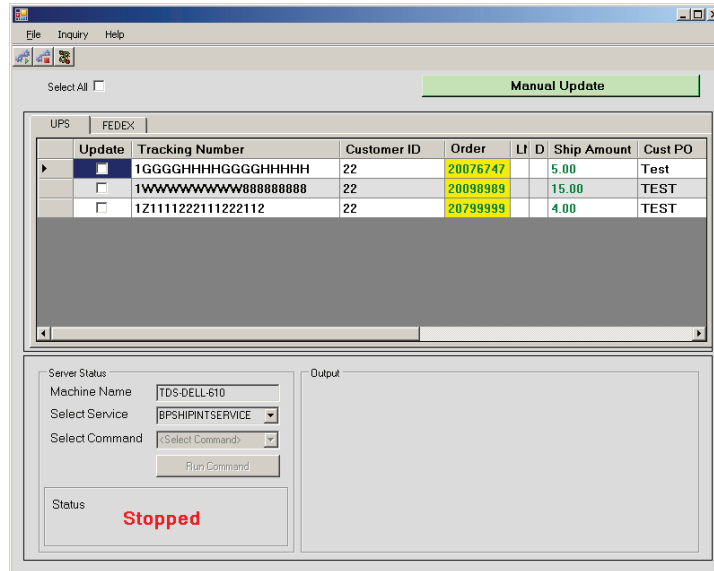
Server Status: Machine Name: TDS-DELL-610, Select Service: BPSHIPINTSERVICE, Select Command: <Select Command>, Run Command, Status: **Stopped**

Output: ORDNUM: 20076796 - TRKNUM 1ZZZZZXXXXZZZZXXXX
1/30/2009 2:35:08 PM - heartbeat cycle - Starting Worker
1: Records affected - Update INVMST Successful
1: Records affected - Insert Document Link Mst Successful
1: Records affected - Insert EShipment Successful
1: Records affected - UpdateEShipFlag Successful
Eship update successful 20076796 - 1Z9999999999999999
VOID ORDNUM: 20076796 - TRKNUM 1Z9999999999999999
1/30/2009 2:35:08 PM - heartbeat cycle - Starting Worker
1: Records affected - Update INVMST Successful
1: Records affected - Insert Document Link Mst Successful
1: Records affected - Insert EShipment Successful
1: Records affected - UpdateEShipFlag Successful
Eship update successful 20076796 - 1Z8888888888888888

Note that the Ship Integration Service will continue to adjust the Ship Charge Amount for a given MAX order until it has been posted to Great Plains. So if there was another shipment for say \$20.00...the orders shipping total in MAX will now be updated to \$30.50 using our previous example.

Ship Integration Service

When processing is complete all you will see are orders that have not shipped in MAX or none at all. Of course you can always query the system for any new pending orders at anytime manually



Technical Support:
Email: support@bptechnologies.com
Phone: (847) 328-7911